

HEAD

WALL CONSTRUCTION PER

CONTINUOUS PERIMETER SEALANT BOTH SIDES

HOLLOW METAL FRAME

DOOR PER DOOR SCHEDULE SWING PER PLAN

JAMB

3 JAMB ANCHORS PER SIDE MIN.

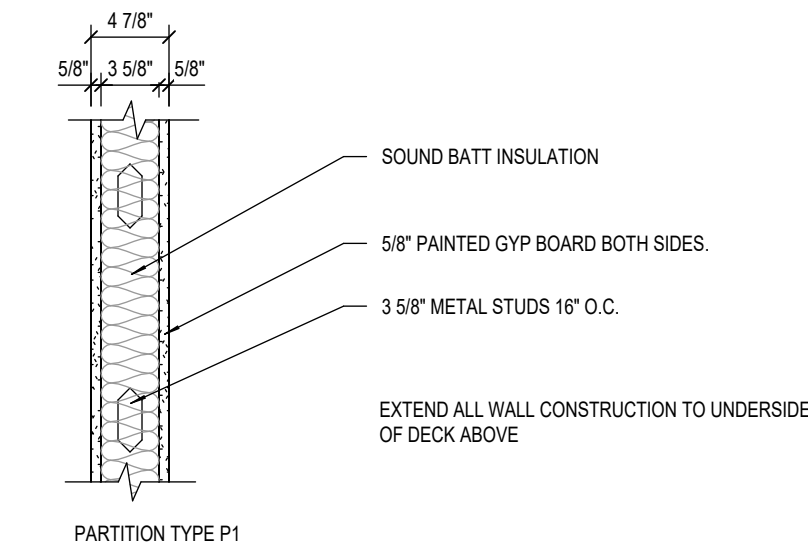
NOTE: ALL DOOR HEAD NOTES ALSO APPLY TO DOOR JAMB

(1) HOLLOW METAL DOOR FRAME

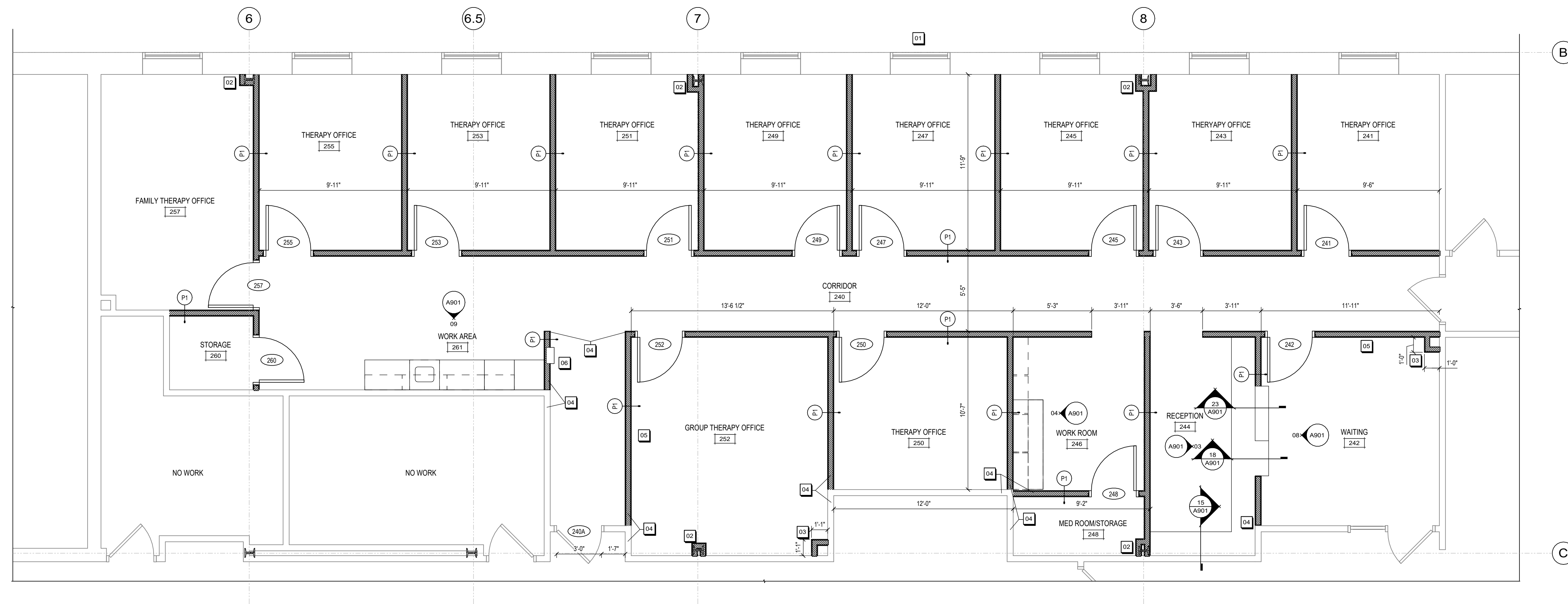
(A) FLUSH WOOD DOOR PANEL

(B) WOOD WITH NARROW LIGHT (TWO PANEL)

04 DOOR FRAME AND TYPE
A102 SCALE: 1/4" = 1'-0"



03 PARTITION TYPE
A102 SCALE: 1" = 1'-0"



FLOOR PLAN GENERAL NOTES	
1.	ALL DOOR FRAMES SHALL BE LOCATED 3" OFF ADJACENT WALLS UNLESS NOTED OTHERWISE.
2.	REFER TO DETAIL 01A102 FOR WALL CONSTRUCTION.
3.	REFER TO MECHANICAL, ELECTRICAL, AND PLUMBING DRAWINGS FOR PENETRATIONS THROUGH WALL.
4.	WALL CONSTRUCTION IS DIMENSIONED FROM FACE OF FINISH WALL TO FACE OF FINISH WALL. SEE FLOOR PLAN FOR APPLICABLE DIMENSIONS.
5.	FIRE EXTINGUISHER CABINETS (FEC) SHALL BE SEMI-RECESSED IN WALLS.

KEYNOTES	
01	REMOVE EXISTING WINDOW AS REQUIRED TO ALLOW FOR MATERIAL DELIVERIES.
02	ENCLOSE EXISTING COLUMN
03	ENCLOSE EXISTING PIPING FOR ROOF DRAIN
04	ALIGN NEW WALL WITH EXISTING CORNER. FINISH FLUSH
05	PROVIDE BLOCKING IN WALL FOR FUTURE TV MONITOR. SEE E202 FOR ELECTRICAL ROUGH IN HEIGHT
06	SEMI-RECESSED FIRE EXTINGUISHER CABINET.

[illegible]

Due to electronic distribution, this drawing may not be printed to the scale indicated on the drawings. Do NOT use scale to determine dimensions or sizes.

No part of this drawing may be used or reproduced in any form or by any means, or stored in a database or retrieval system, without prior written permission of.

ANGUS - YOUNG ASSOCIATES, INC.
Copyright © 2025 All Rights Reserved

PROJECT NUMBER
79760

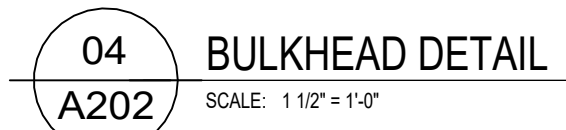
APPROVED BY
JJS

REVIEWED BY
KLR

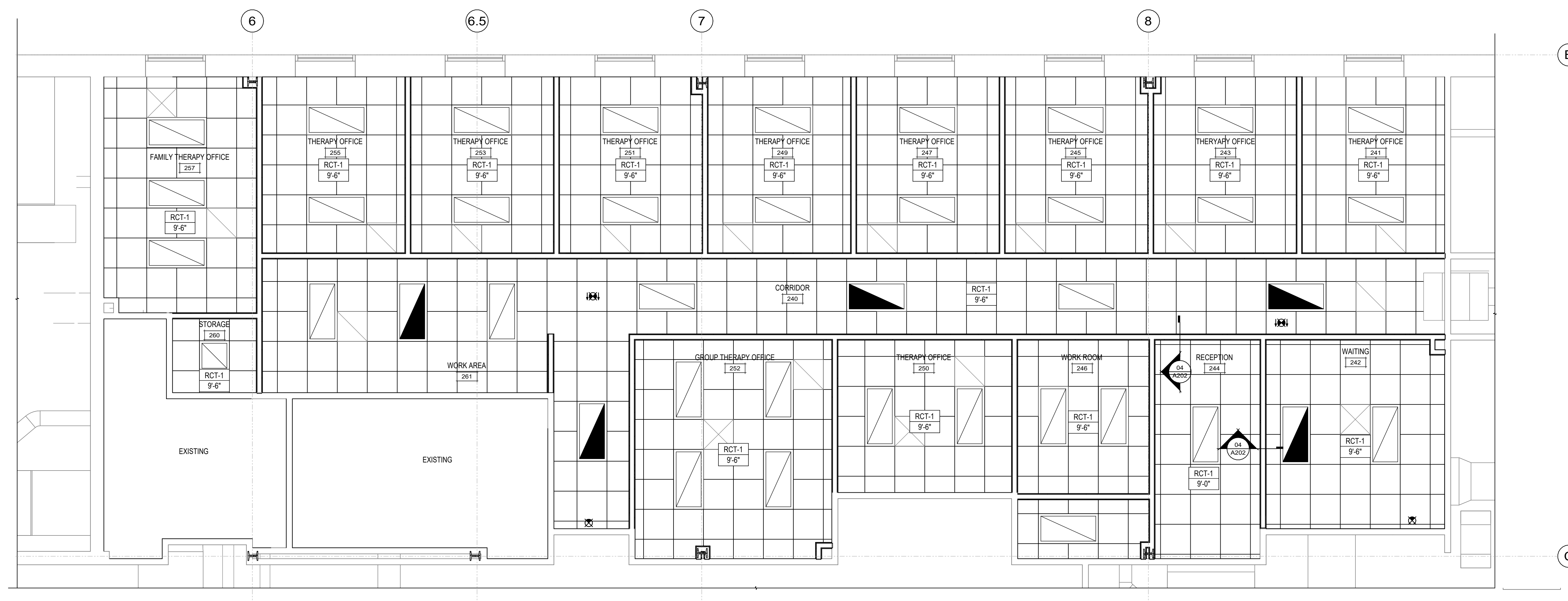
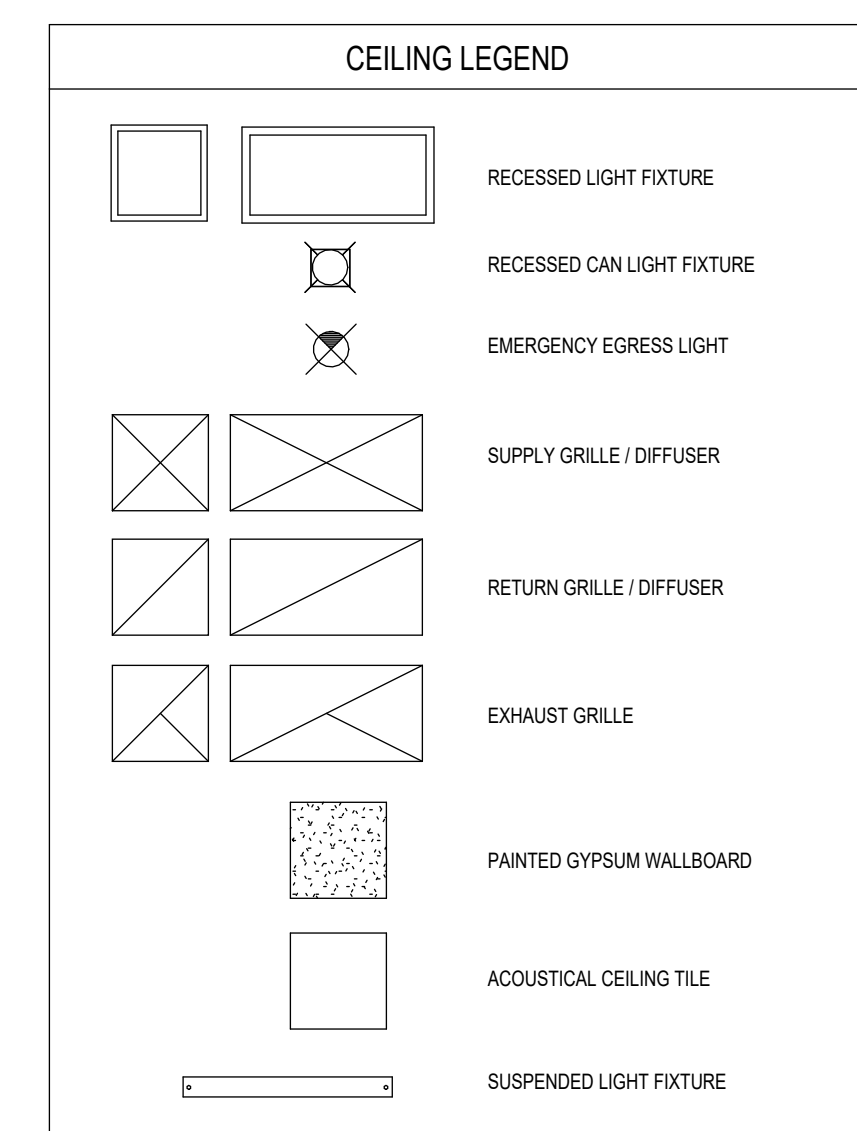
DRAWN BY
RMB


SECOND LEVEL FLOOR PLAN,
SCHEDULES, AND DOOR
TYPE/FINISH

A102



1. CONTRACTOR SHALL FOLLOW CEILING GRID PATTERN ESTABLISHED ON THE REFLECTED CEILING PLAN. ANY VARIATIONS SHALL BE APPROVED BY THE ARCHITECT.
2. MOUNT CEILING FANS, SPRINKLER HEADS, SPEAKERS, SUPPLY AIR DIFFUSERS, ETC. IN THE CENTER OF WHOLE CEILING PANELS.
3. WIRE CEILING FROM STRUCTURE ABOVE AND WIRE FOR ADDITIONAL LOAD AT LIGHTS AND CEILING DIFFUSERS.
4. CEILING TYPE AS NOTED ON ROOM FINISH SCHEDULE. CEILING HEIGHT AS NOTED ON REFLECTED CEILING PLANS.
5. PENDANT MOUNTED FIXTURES CEILING NOT ON GRID REQUIRE GRID TO BE CUT AND SUPPORTED ON EACH SIDE.
6. ACHIEVE A RIGID PANEL BACKER TO PANELS AT LOCATIONS OF SPEAKERS, DIFFUSERS, LIGHTS, SMOKE DETECTORS, EXIT LIGHTS, CEILING FANS, TELEVISION BRACKETS, AND FIRE PROTECTION SPRINKLERS.
7. PROVIDE AN ADDITIONAL CROSS TIE AT EACH SLOT DIFFUSER.
8. PROVIDE 2" CEILING GRID CROSS TIE AT EACH RETURN GRILLE.
9. UNLESS OTHERWISE NOTED, CEILING TO BE: SUSPENDED METAL TIE Z-012" OR TIE Z-014" OF TYPICAL, MANUFACTURED AND FINISH AS SPECIFIED.
10. SOME CORRIDOR CEILING PANEL LAYOUTS HAVE BEEN ADJUSTED AT A CHANGE IN CORRIDOR DIRECTION TO ACCOMMODATE LIGHTING ALAYOUT.



 NORTH

SECOND FLOOR REFLECTED CEILING PLAN

SCALE: 1/4" = 1'-0"

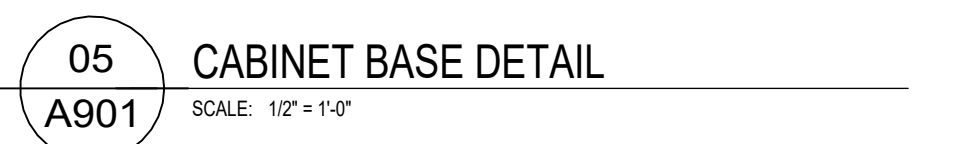
[illegible]

ANGUS - YOUNG ASSOCIATES, INC.
Copyright © 2025 All Rights Reserved

DRAWN BY
RMB

A202

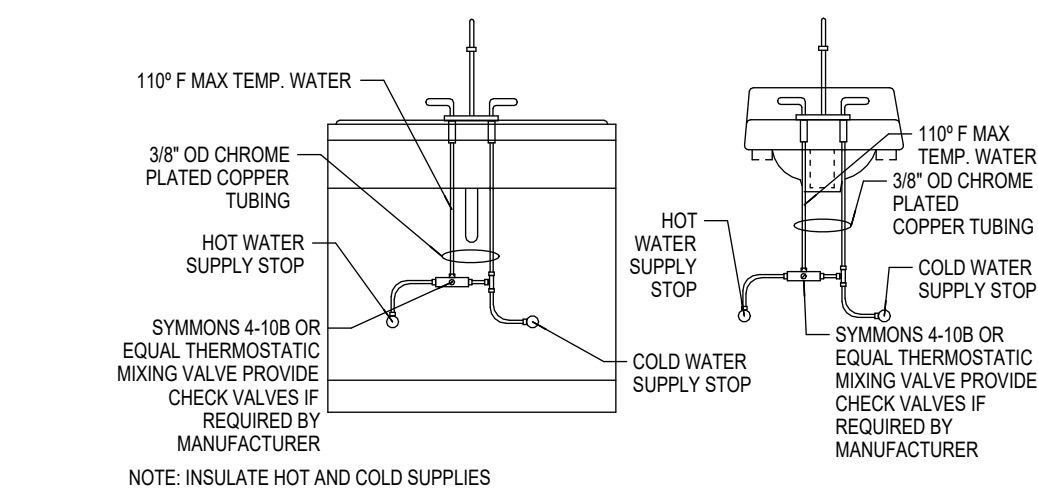
MATERIAL SCHEDULE				
Division	Code	Material	Name & Number	Manufacturer
Division 06 41 15 - PLASTIC-LAMINATE-CLAD ARCHITECTURAL CABINETS				
Division 06 41 16 - PLASTIC-LAMINATE-CLAD ARCHITECTURAL CABINET	PLAM-1	Plastic Laminates (Upper/Lowers)		Wisonart
Division 06 41 16 - PLASTIC-LAMINATE-CLAD ARCHITECTURAL CABINETS	PLAM-2	Plastic Laminates (Counter/Top)		Wisonart
Division 06 52 13 - FIBERGLASS REINFORCED PLASTIC				
Division 06 52 13 - FIBERGLASS REINFORCED PLASTIC	FRP-2	Fiberglass Reinforced Plastic Panel	Digital Print	Crane Composites
Division 08 14 00 - WOOD DOORS				
Division 08 14 00 - WOOD DOORS		WOOD		Base of Design
Division 09 51 00 - ACoustICAL CEILING				
Division 09 51 00 - ACoustICAL CEILING	ACT-1	Acoustic Ceiling Tile		USG
Division 09 65 19 - Luxury Vinyl Tile				
Division 09 65 19 - Luxury Vinyl Tile	LVT-1	Luxury Vinyl Tile		Raskin Industries
Division 09 68 00 - CARPET				
Division 09 68 00 - CARPET	CPF-1	Carpet Tile		Bentley Mills
Division 09 68 00 - CARPET	CPF-2	Carpet Tile		Bentley Mills
Division 09 68 01 VINYL BASE				
Division 09 68 01 VINYL BASE	RB-1	Resilient Base		Burke
Division 09 90 00 - PAINTING AND COATING				
Division 09 90 00 - PAINTING AND COATING	PT-1	Paint (Flat)		Pittsburgh Paints
Division 09 90 00 - PAINTING AND COATING	PT-2	Paint (Scent Wall)		Pittsburgh Paints
Division 10 20 00 - WALL AND DOOR PROTECTION				
Division 10 20 00 - WALL AND DOOR PROTECTION	CG	(Impact-Resilient Plastic)		Inpro



- | KEYNOTES | |
|----------|--------------------------|
| 01 | CPT-1 |
| 02 | CPT-2 |
| 03 | LVT-1 |
| 04 | PT-2 (ACCENT WALL COLOR) |
| 05 | CORNER GUARD |
| 06 | PROVIDE TRANSITION STRIP |

[illegible]

PLUMBING FIXTURE CONNECTION SCHEDULE AND FIXTURE UNIT VALUES														
TAG	DESCRIPTION	CONNECTIONS			WSFU						DFU			
		WASTE	HOT / TEMPERED	COLD	HOT / TEMPERED	COLD	SUBTOTAL	FIXTURES	H/T SUBTOTAL	COLD SUBTOTAL	TOTAL	VALUE	FIXTURES	TOTAL
S-1	SINGLE COMPARTMENT DROP-IN SINK	2"	1/2"	1/2"	2	2	4	1	2	2	4	2	1	2
TOTALS								1	2.00	2.00	4.00	2	1	2



STRUCTURAL MEMBER
(IF NEW MEMBER IS REQUIRED,
PLUMBING CONTRACTOR SHALL
PROVIDE)

BEAM CLAMP B-LINE FIG. B3030E

ROD, SEE SCHEDULE
FOR DIMETER

B-LINE FIG. B3100

ADJUSTABLE CLEVIS

PIPE

PIPE

PIPE SIZE	1/2"	1"	2"	4"	6"
ROD DIMETER	3/8"	3/8"	3/8"	5/8"	3/4"

NOTE: SIZE HANGER TO ALLOW FOR PIPE INSULATION AS REQUIRED BY INSULATION SPECIFIC

DOMESTIC COLD WATER SUPPLY LINE

DOMESTIC COLD WATER LINE
REFER TO FLOOR PLAN FOR SIZE AND ROUTING.

BALL VALVE

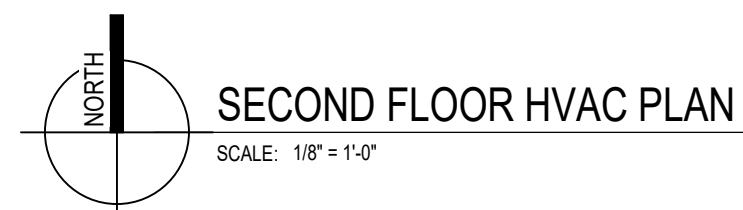
LENGTH VARIES

PIPE DROP CONTINUED TO FIXTURE
COORDINATE FINAL LOCATION WITH
PLUMBING AND ELECTRICAL CONTRACTORS

PLUMBING LINE LEGEND	
_____	DOMESTIC COLD WATER
_____	DOMESTIC HOT WATER
_____	DOMESTIC HOT WATER RETURN
_____	SANITARY VENT
_____	SANITARY VENT

NOTE: ALL LINES MAY NOT BE USED IN THIS SET.





- | KEYNOTES | |
|----------|---|
| 01 | BOTTOM OF EXISTING 20" HOT WATER SUPPLY & RETURN PIPING AT 11'-4" CONFIRM IN FIELD. |
| 02 | EXISTING EXISTING 18" VAC SA DUCT AT 10'-0" CONFIRM IN FIELD. |
| 03 | UNCAP EXISTING WATER DUCT. EXTEND AIR TRANSFER DUCT AS PER DETAIL (3000). |
| 04 | EXISTING CHILLED WATER SUPPLY & RETURN PIPING INSTALLED ABOVE HOT WATER SUPPLY & RETURN PIPING. |
| 05 | TABLED-20 BE INSTALLED BELOW EXISTING CHILLED WATER SUPPLY & RETURN PIPING. |
| 06 | ANALYZE AIR TRANSFER DUCT OBSERVED IN FIELD. CONTRACTOR TO CONFIRM SIZE AND FUNCTIONALITY. IF NOT OPERATIONAL, CONTRACTOR TO DEMO AIR TRANSFER DUCT FUNCTIONAL AND RE-INSTALL TRANSFER DUCT AS PER DETAIL (3000). |
| 07 | CONTRACTOR TO INSTALL AIR TRANSFER DUCT 10' MAX TO EXISTING AIR TRANSFER DUCTS PER KEYNOTE 08. |
| 08 | CONTRACTOR TO CONFIRM EXISTING AIR TRANSFER DUCT FUNCTIONAL. IF NOT FUNCTIONAL, CONTRACTOR TO DEMO AIR TRANSFER DUCT IS FUNCTIONAL. |

ALL SYMBOLS MAY NOT BE USED IN THIS SET

NOTE: ALL LINES MAY NOT BE USED IN THIS SET

ALL SYMBOLS MAY NOT BE USED IN THIS SET

4/9/2025 6:15:26 PM

Due to electronic distribution, this drawing may not be printed to the scale indicated on the drawings. Do NOT use scale to determine dimensions or sizes.

No part of this drawing may be used or reproduced in any form or by any means, or stored in a database or retrieval system, without prior written permission of.

ANGUS - YOUNG ASSOCIATES, INC.
Copyright © 2024 All Rights Reserved

PROJECT NUMBER
79760

APPROVED BY
AYA

REVIEWED BY
AYA

DRAWN BY
MRK

SECOND FLOOR HVAC PLAN

M101



Janesville | Madison | Rockford

COLUMBIA COUNTY

COLUMBIA CTY - MENTAL
HEALTH CLINIC

111 E MULLETT ST,
PORTAGE, WI 53901

[illegible]

4/10/2025 8:47:04 AM

Due to electronic distribution, this drawing may not be printed to the scale indicated on the drawings. Do NOT use scale to determine dimensions or sizes.

No part of this drawing may be used or reproduced in any form or by any means, or stored in a database or retrieval system, without prior written permission of.

ANGUS - YOUNG ASSOCIATES, INC.
Copyright © 2025 All Rights Reserved

PROJECT NUMBER
79760

PROJECT NUMBER
79760

APPROVED BY
JJS

APPROVED BY
JJS

REVIEWED BY
CTK

REVIEWED BY
CTK

DRAWN BY
MJA

DRAWN BY
MJA

SECOND FLOOR POWER AND SYSTEMS DEMOLITION PLAN

SECOND FLOOR POWER AND SYSTEMS DEMOLITION PLAN

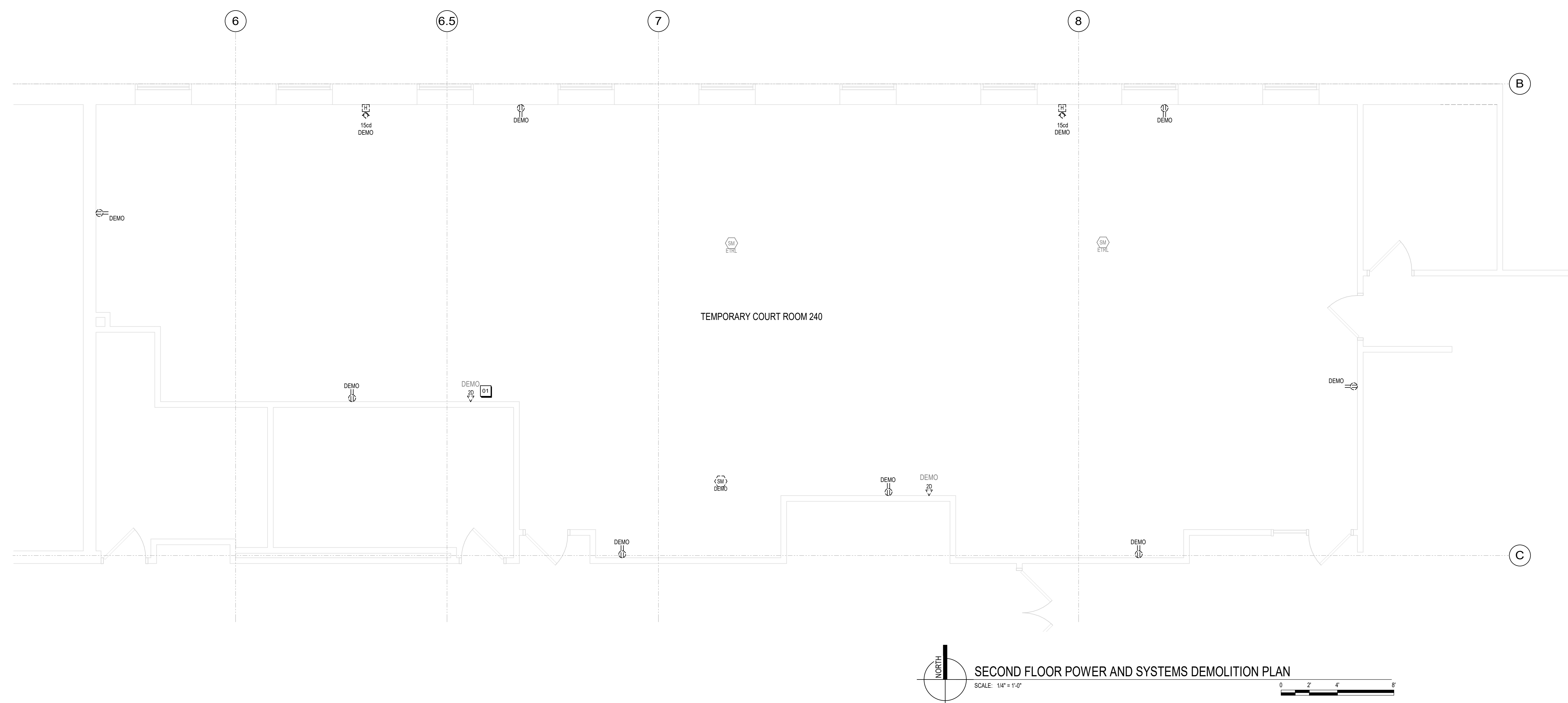
ED202

DEMO NOTES

- [illegible]

KEYNOTES

- 01** PULL DATA CABLE AND RELOCATE COILED TO NEW LOCATION ABOVE OF CEILING IN CORRIDOR 240. COORDINATE WITH OWNER FOR EXACT LOCATION IN THE CORRIDOR. THIS IS FOR OWNER PROVIDED WAP.



C:\Revit\LocalProjects\79760rE-V2023_ay_madalin.rvt

Sheet Size: 30" x 42" (Arch E1)



Janesville | Madison | Rockford

COLUMBIA COUNTY

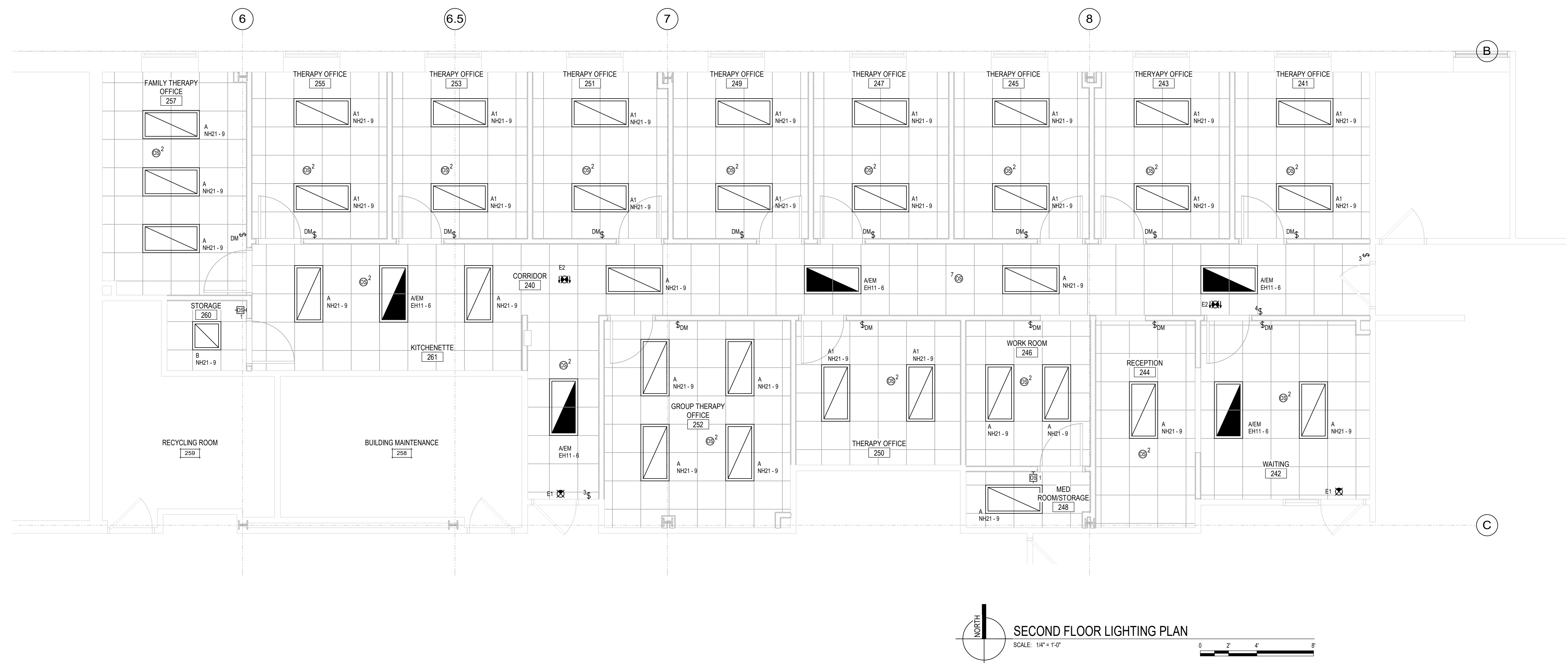
COLUMBIA CTY - MENTAL
HEALTH CLINIC

111 E MULLETT ST,
PORTAGE, WI 53901



SHEET NOTES

- 1 THE BUILDING WILL REMAIN OCCUPIED AND IN USE DURING THE RENOVATION PROCESS.
2 SCHEDULE THE WORK TO MINIMIZE DISRUPTION AND COORDINATE ANY NECESSARY
3 TRAVEL THROUGH THE AREAS OF THE PROJECT.
- 4 THE INFORMATION SHOWN ON THESE DRAWINGS WAS OBTAINED FROM THE ORIGINAL
5 CONTRACTOR DRAWINGS WHERE AVAILABLE, AND FROM LIMITED FIELD REVIEW OF THE
6 EXISTING WORK. THE CONTRACTOR SHALL BE RESPONSIBLE FOR VERIFYING AND RECONCILING
7 THE EXISTING SYSTEMS TO THE EXTENT NECESSARY TO ACCURATELY DETERMINE THE EXACT
8 EXTENT OF THE REQUIRED WORK.
- 9 THE CONTRACTOR'S BID PRICE SHALL INCLUDE THE RESOLUTION OF UNEXPECTED DISCREPANCIES
10 BETWEEN THE INFORMATION PROVIDED TO THE START OF THE RENOVATION. THE CONTRACTOR
11 SHALL REVEAL ALL EXISTING ELECTRICAL SYSTEMS AND SYSTEM COMPONENTS AND
12 IDENTIFY AND REPORT ANY DISCREPANCIES TO THE ARCHITECT. THE CONTRACTOR SHALL
13 CONTROLLED EQUIPMENT OR COMPONENTS NOT NOTED IN THE PLANS OR SPECIFICATIONS
14 PRIOR TO THE COMMENCEMENT OF THE WORK SHALL ALSO BE REPORTED TO THE A/E.
- 15 THE CONTRACTOR SHALL FIELD ALL VERTICAL ALIGNMENTS AND SCOPE OF EXISTING BRANCH
16 CABLES AND CABLE TRAYS. THE CONTRACTOR SHALL BE RESPONSIBLE FOR THE PROTECTION OF
17 EXISTING ELECTRICAL SYSTEMS AND EQUIPMENT.
- 18 CONTRACTOR SHALL PROTECT ALL WALLS, CEILING, FLOORS, LIGHTS AND OTHER FINISHED
19 SURFACES. IF DAMAGED, CONTRACTOR SHALL REPAIR OR REPLACE TO MATCH EXISTING
20 CONDITIONS AT AN ADDITIONAL COST TO THE OWNER. VERIFY LOCATIONS AND PROTECT
21 ALL EXISTING ELECTRICAL SYSTEMS AND EQUIPMENT.
- 22 ALL MATERIALS & EQUIPMENT REQUIRING REMOVAL AND RELOCATION FOR REUSE SHALL BE
23 CAREFULLY REMOVED AND STORED TO PREVENT DAMAGE AND SHALL BE REINTEGRATED AS
24 APPROPRIATE.
- 25 ALL ELECTRICAL EQUIPMENT FOUND TO BE NONFUNCTIONAL OR IN NEED OF REPAIR OR
26 MAINTENANCE WORK SHALL BE REPORTED TO THE A/E AND THE OWNER.
- 27 ALL RACEWAY'S TO BE CONCEALED IN WALLS OR ABOVE CEILING UNLESS APPROVED BY THE
28 OWNER PRIOR TO INSTALLATION. IN EXPOSED CEILING AREAS, CONDUIT IS TO BE PAINTED TO MATCH
29 THE CEILING.
- 30 ALL EXPOSED LOW VOLTAGE CABLEING TO BE IN CONDUIT. LOW VOLTAGE CABLEING ABOVE CEILING
31 IS TO BE PLUMB RATED.
- 32 OCCUPANCY SENSOR VULNERALITY IS SHOWN DIAGRAMMATICALLY PROVIDE NECESSARY QUANTITY OF
33 OCCUPANCY SENSORS TO ACHIEVE COMPLETELY UNOCCUPIED AND UNOCCUPIED CONTROL.
- 34 ALL EXPOSED LOW VOLTAGE CABLEING TO BE IN CONDUIT. LOW VOLTAGE CABLEING ABOVE CEILING
35 IS TO BE PLUMB RATED.
- 36 LIGHTING FIXTURES WITH EIMS IS POWERED FROM EXISTING GFI PANEL.



C:\Revit\LocalProjects\79760rvE-V2023_ay_madalin.rvt

Sheet Size: 30" x 42" (Arch E1)

[illegible]

Due to electronic distribution, this drawing may not be printed to the scale indicated on the drawings. Do NOT use scale to determine dimensions or sizes.

No part of this drawing may be used or reproduced in any form or by any means, or stored in a database or retrieval system, without prior written permission of.

ANGUS - YOUNG ASSOCIATES, INC.
Copyright © 2025 All Rights Reserved

PROJECT NUMBER
79760

APPROVED BY
JJS

REVIEWED BY
CTK

DRAWN BY
MJA

SECOND FLOOR LIGHTING PLAN

E102

C:\Revit\Local\Projects\797656\E\2023_3y_madain.rvt

Sheet Size: 30" x 42" (Arch E1)

- KEYNOTES
- 01 NEW LIGHTING CIRCUIT IN EXISTING PANEL NH21 CIRCUIT 9.
- 02 NEW CIRCUITS IN EXISTING PANEL NLH21 FROM CIRCUIT 67 THROUGH 83 IN NLH21.
- 03 NEW CIRCUITS IN EXISTING PANEL OSL21 FROM CIRCUIT 34 THROUGH 41 AND 49.
- 04 NEW ADDITIONAL LOAD EM LIGHTS IN EXISTING PANEL EH11-6.

PANELBOARD: EH11													
LOCATION:			VOLTAGE: 480Y/277 V, 3 ø 4 W.										
MOUNTING: SURFACE NEMA 1			A.I.C. RATING: 42,000 AMPS SYMMETRICAL										
MAIN DEVICE: 100.0 A MAIN CB			SPECIAL:										
BUS AMPS: 100 AMPS													
LOAD DESCRIPTION	BKR	P	CKT	PHASE A kVA	PHASE B kVA	PHASE C kVA	CKT	P	BKR	LOAD DESCRIPTION			
LIGHTING *10	20 A	1	1	4.3	1.7		2	1	20 A	LIGHTING			
LIGHTING	20 A	1	3		0.5	0.5		4	1	20 A	LIGHTING		
PANEL EL11 VIA TR-15, *10	30 A	3	5			0.7	0.2	6	1	20 A	LIGHTING 240, 242		
			7	0.0	0.0		8	1	20 A	SPARE			
			9		0.0	0.0		10	1	20 A	SPARE		
SPARE	20 A	1	11			0.0	0.0	12	1	20 A	SPARE		
SPARE	20 A	1	13	0.0	0.0			14	1	20 A	SPARE		
SPACE	--	1	15	--	--	--	--	16	1	--	SPACE		
SPACE	--	1	17	--	--	--	--	18	1	--	SPACE		
SPACE	--	1	19	--	--	--	--	20	1	--	SPACE		
SPACE	--	1	21	--	--	--	--	22	1	--	SPACE		
SPACE	--	1	23	--	--	--	--	24	1	--	SPACE		
SPACE	--	1	25	--	--	--	--	26	1	--	SPACE		
SPACE	--	1	27	--	--	--	--	28	1	--	SPACE		
SPACE	--	1	29	--	--	--	--	30	1	--	SPACE		
TOTAL LOAD:				6 kVA	1 kVA	1 kVA							
TOTAL AMPS:				22 A	3.9 A	3 A							
LOAD CLASSIFICATION			CONNECTED	DEMAND	ESTIMATED		PANEL TOTALS						
LITES			183 VA	125.00%	229 VA								
			CONNECTED LOAD: 7935 VA										
			ESTIMATED DEMAND: 7977 VA										
			CONNECTED CURRENT: 9.5 A										
			EST. DEMAND CURRENT: 9.6 A										
NOTES:													
FED FROM ATS-EM. LOCATED IN 1ST FLOOR EMERGENCY POWER ROOM 197.													
EH11 PANEL IS LOCATED IN THE FIRST FLOOR.													

PANELBOARD: NH21																					
LOCATION: ELECTRICAL CLOSET...				VOLTAGE: 480Y/277 V, 3 ø 4 W.																	
MOUNTING: SURFACE NEMA 1				A.I.C. RATING: 14,000 AMPS SYMMETRICAL																	
MAIN DEVICE: 100.0 A MLO				SPECIAL:																	
BUS AMPS: 100 AMPS																					
LOAD DESCRIPTION	BKR	P	CKT	A	B	C	CKT	P	BKR	LOAD DESCRIPTION											
LIGHTING	20 A	1	1	3.8	2.0		2	1	20 A	LIGHTING											
LIGHTING	20 A	1	3		2.8	3.1	4	1	20 A	LIGHTING											
LIGHTING	20 A	1	5			4.2	6	1	20 A	LIGHTING											
LIGHTING	20 A	1	7	0.1	0.0		8	1	20 A	SPARE											
LIGHTING	20 A	1	9		1.5	0.0	10	1	20 A	SPARE											
SPARE	20 A	1	11			0.0	12	1	20 A	SPARE											
SPARE	20 A	1	13	0.0	--		14	1	--	SPACE											
SPACE	--	1	15	--	--	--	16	1	--	SPACE											
SPACE	--	1	17	--	--	--	18	1	--	SPACE											
SPACE	--	1	19	--	--	--	20	1	--	SPACE											
SPACE	--	1	21	--	--	--	22	1	--	SPACE											
SPACE	--	1	23	--	--	--	24	1	--	SPACE											
SPACE	--	1	25	--	--	--	26	1	--	SPACE											
SPACE	--	1	27	--	--	--	28	1	--	SPACE											
SPACE	--	1	29	--	--	--	30	1	--	SPACE											
SPACE	--	1	31	--	--	--	32	1	--	SPACE											
SPACE	--	1	33	--	--	--	34	1	--	SPACE											
SPACE	--	1	35	--	--	--	36	1	--	SPACE											
SPACE	--	1	37	--	--	--	38	1	--	SPACE											
SPACE	--	1	39	--	--	--	40	1	--	SPACE											
SPACE	--	1	41	--	--	--	42	1	--	SPACE											
TOTAL LOAD:				6 kVA	7 kVA	7 kVA															
TOTAL AMPS:				22 A	27.0 A	26 A															
LOAD CLASSIFICATION			CONNECTED	DEMAND	ESTIMATED		PANEL TOTALS														
LITES			1520 VA	125.00%	1900 VA																
			CONNECTED LOAD: 20329 VA																		
			ESTIMATED DEMAND: 20876 VA																		
			CONNECTED CURRENT: 24.5 A																		
			EST. DEMAND CURRENT: 24.9 A																		
NOTES:																					
FED FROM SB-MAIN																					

PANELBOARD: OSL21													
LOCATION: ELECTRICAL CLOSET...				VOLTAGE: 208Y/120 V, 3 ø 4 W.									
MOUNTING: SURFACE NEMA 1				A.I.C. RATING: 10,000 AMPS SYMMETRICAL									
MAIN DEVICE: 225.0 A MAIN CB				SPECIAL:									
BUS AMPS: 225 AMPS													
LOAD DESCRIPTION	BKR	P	CKT	A	B	C	CKT	P	BKR	LOAD DESCRIPTION			
RECEPTACLES	20 A	1	1	0.7	0.4		2	1	20 A	RECEPTACLES			
RECEPTACLES	20 A	1	3		0.4	0.4		4	1	20 A	RECEPTACLES		
RECEPTACLES	20 A	1	5			0.2	6	1	20 A	RECEPTACLES			
RECEPTACLES	20 A	1	7	0.2	0.7		8	1	20 A	P-9			
FP-201	20 A	3	9		0.6	0.8	10	1	20 A	FP-208			
			11			0.6	0.8	12	1	20 A	FP-210		
FP-212	20 A	1	13	0.6	0.8		14	1	20 A	FP-221			
FP-223	20 A	1	15		0.8	0.8		16	1	20 A	FP-224		
FP-223	20 A	1	17			0.8	0.8	18	1	20 A	FP-230		
FP-227	20 A	1	19	0.8	--			20	1	--	SPACE		
FP-233	20 A	1	21		0.0	--		22	1	--	SPACE		
SPACE	--	1	23	--	--	0.8	24	1	20 A	FP-282			
FP-271	20 A	1	25	0.8	0.8			26	1	20 A	FP-290		
FP-286	20 A	1	27		0.8	0.0		28	1	20 A	SPARE		
FP-255	20 A	3	29		0.6	0.0	30	1	20 A	SPARE			
			31	0.6	0.5		32	1	20 A	SHUNT TRIP BREAKER			
RCPT FAMILY THERAPY...	20 A	1	33		0.6	0.4	34	1	20 A	RCPT THERAPY OFFICE...			
RCPT THERAPY OFFICE...	20 A	1	35			0.7	36	1	20 A	RCPT RECEPTION 244			
RCPT THERAPY OFFICE...	20 A	1	37	0.7	0.7		38	1	20 A	RCPT THERAPY OFFICE...			
RCPT THERAPY OFFICE...	20 A	1	39		0.7	0.0	40	1	20 A	SPARE			
RCPT THERAPY OFFICE...	20 A	1	41			0.7	42	1	20 A	SPARE			
SPACE	20 A	1	43	0.0	0.0		44	1	20 A	SPARE			
SPACE	20 A	1	45		0.0	0.0	46	1	20 A	SPARE			
SPACE	20 A	1	47			0.0	48	1	20 A	SPARE			
RCPT MED...	20 A	1	49	0.2	0.0		50	1	20 A	RECEPTACLES			
RECEPTACLES	20 A	1	51		0.7	0.7	52	1	20 A	RECEPTACLES			
RECEPTACLES	20 A	1	53			0.7	54	1	20 A	RECEPTACLES			
RECEPTACLES	20 A	1	55	0.7	0.7		56	1	20 A	RECEPTACLES			
RECEPTACLES	20 A	1	57			0.7	58	1	20 A	RECEPTACLES			
RECEPTACLES	20 A	1	59			0.7	60	1	20 A	RECEPTACLES			
RECEPTACLES	20 A	1	61	0.7	0.3		62	1	20 A	RECEPTACLES			
RECEPTACLES	20 A	1	63		0.7	0.7	64	1	20 A	RECEPTACLES			
RECEPTACLES	20 A	1	65			0.7	66	1	20 A	RECEPTACLES			
RECEPTACLES	20 A	1	67	0.4	0.7		68	1	20 A	RECEPTACLES			
RECEPTACLES	20 A	1	69			0.7	70	1	20 A	RECEPTACLES			
RECEPTACLES	20 A	1	71			0.7	72	1	20 A	RECEPTACLES			
RECEPTACLES	20 A	1	73	0.7	0.7		74	1	20 A	RECEPTACLES			
RECEPTACLES	20 A	1	75		0.7	--	76	1	--	SPACE			
SPACE	--	1	77		--	--	78	1	--	SPACE			
SPACE	--	1	79		--	--	80	1	--	SPACE			
SPACE	--	1	81		--	--	82	1	--	SPACE			
SPACE	--	1	83		--	--	84	1	--	SPACE			
TOTAL LOAD:				13 kVA	13 kVA	12 kVA							
TOTAL AMPS:				111 A	104.8 A	104 A							
LOAD CLASSIFICATION	CONNECTED	DEMAND	ESTIMATED	PANEL TOTALS									
RCPT	4860 VA	100.00%	4860 VA										
				CONNECTED LOAD: 36283 VA									
				ESTIMATED DEMAND: 36283 VA									
				CONNECTED CURRENT: 106.3 A									
				EST. DEMAND CURRENT: 106.3 A									